



CANINE BED BUG INSPECTION

Certified by the National Entomology Scent Detection Canine Association

THE MOST ACCURATE BED BUG DETECTION TOOL AVAILABLE TODAY!

- ✓ Detects **LIVE BED BUGS** and **LIVE BED BUG EGGS**, within minutes.
- ✓ Over 97% accuracy, same as bomb-sniffing dogs.
- ✓ Regular canine inspections prevent client complaints and reduce long-term remediation costs.
- ✓ More accurate results lead to lower remediation costs.



K-9 INSPECTION ADVANTAGES

SAVES MONEY

- The only 'tool' that accurately detects ALL STAGES of LIVE BED BUGS by their scent.
- They can search an entire hotel room in 2-3 minutes with 97% accuracy.
- A regular pro-active inspection program can reduce the possible financial impact and damage to your brand reputation.
- Early detection can lead to lower remediation costs.

PEACE OF MIND

- If a bed bug is detected, that specific area can be treated before the problem spreads.
- Regular inspections provide peace of mind to you and your clients that your properties are bed bug free.
- An inspection following a treatment can confirm that all bed bugs have been eliminated.

PROVEN SUCCESS

- Dogs have been used for years to detect bombs, drugs, termites and more with their keen scent.
- They can accurately track a scent through mattresses, inside furniture, into walls and more.
- Dogs that are properly trained and certified are recognized in court as a 'scientific instrument'.

ROSE K-9 TEAM ADVANTAGES

ENTOMOLOGIST DEVELOPED PROGRAMS

- The Rose K-9 Team program is developed and supervised by the Board Certified Entomologists at Rose.
- Rose staff Entomologists continue to research the latest techniques and develop specific programs that are proven effective against bed bug infestations.
- If bed bugs are found, we will work with you to determine the preferred solution for resolving your problem.

NESDCA CERTIFICATION

Why It's Important To You

- This third party accreditation ensures that our bed bug scent detection dogs alert **ONLY** to LIVE BED BUGS and LIVE BED BUG EGGS.
- Rose dogs and their handlers are re-certified annually through both NESDCA and Rose Pest Solutions.
- For more information visit: <http://www.nesdca.com>.



National
Entomology
Scent Detection
Canine
Association

800-966-7673
www.RosePestSolutions.com



COMPARE: HUMAN -VS- CANINE INSPECTION

TYPICAL PEST PROFESSIONAL	BED BUG INSPECTION CANINES
40-60% accurate at detecting adult bed bugs.	97% accurate at detecting all live bed bugs; egg to adults.
15-20 minutes per room to inspect.	2-3 minutes per room to inspect.
More disruptive; must pull apart beds, remove headboards, move furniture, etc.	Minimal to no disruption. Room is left intact.
Limited to visual identification.	Can detect bed bugs among clutter, in mattresses, upholstered furniture, carpets, cracks and crevices through scent.

ROSE K-9 SCENT DETECTION TEAMS

TEAM CHILI



Chili, a young Corgi/Beagle mix was adopted from a shelter in Georgia. He weighs about 19 lbs., has long hair and a gentle personality. But when Chili goes to work you can tell that he's a natural bed bug detective!



Terry Giffin
 Handler

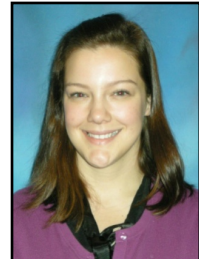


Jay Pollice
 Associate Handler

TEAM RANGER



Ranger, a young beagle, comes to us from a rabbit dog breeder in North Carolina. Born with scent detection in his blood, Ranger loves to sniff around for bed bugs. Ranger's brothers and sister are being trained to detect bed bugs too!



Becca DeClark
 Handler



Monica Gazvoda
 Associate Handler

Rose scent detection dogs are trained by J&K Canine Academy. J&K Canine Academy is the only canine training program in the world that is independently researched and tested with published results.



www.RosePestSolutions.com

